

V1 Valve Installation

ISSUE No	A	DATE	23/08/23	SIGNED	RS
ISSUE No		DATE		SIGNED	
ISSUE No		DATE		SIGNED	

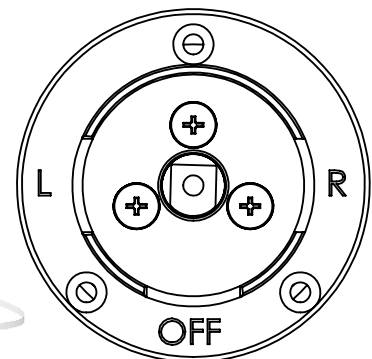
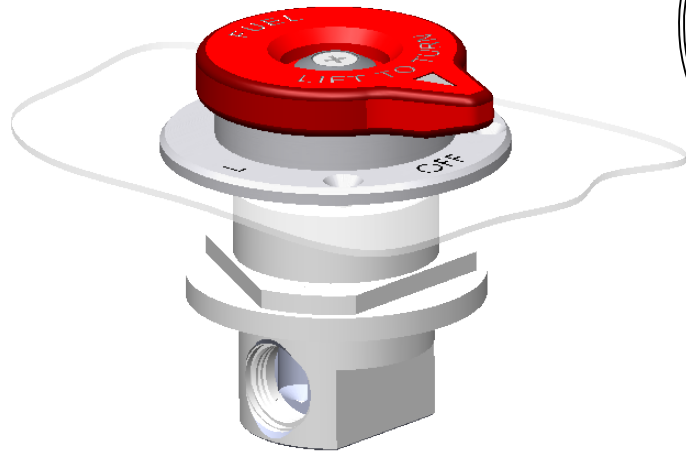


Fig 3

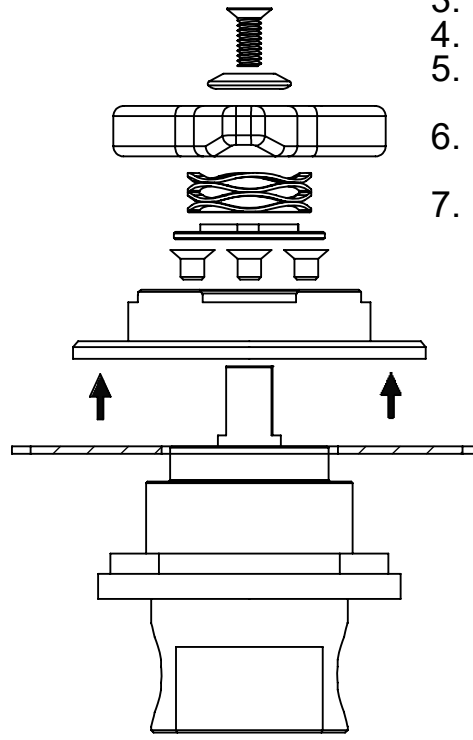


Fig 1

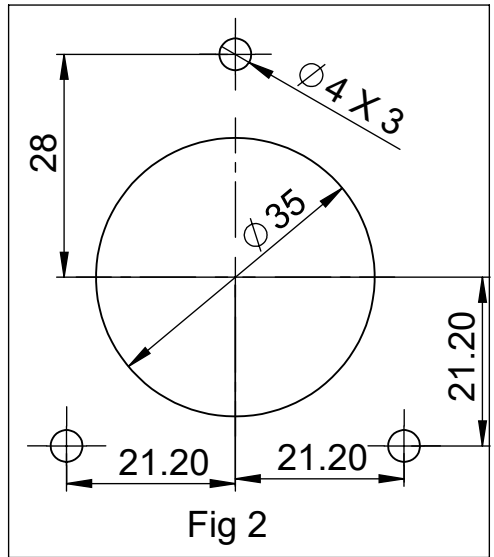


Fig 2
Ø 70 Selector plate mounting dimensions

INSTALLATION INSTRUCTIONS

1. Remove Lever & Selector Plate assembly (Fig1).
2. Mark centre position for Valve location.
3. Mark holes as per template (Fig 2).
4. Cut Ø35 Hole & 3 - Ø4 Holes & attach Selector Plate.
5. Offer Valve through Ø35 hole on the underside of mounting surface.
6. Fix Valve body to Selector Plate using the 3 x 10-32 x1/4 " screws (Fig 3)
7. Refit lever assembly

UNLESS OTHERWISE SPECIFIED:
DIMENSIONS ARE IN MILLIMETERS 0.00 ± 0.05mm
0.0 ± 0.1mm
GENERAL TOLERANCES: ± 0.25mm
ANGULAR: ± 0.25°

BREAK ALL SHARP EDGES 0.25 RAD OR CHAMFER

THIS DRAWING IS THE PROPERTY OF NEWTON CONSULTING SPRL AND IS NOT TO BE COMMUNICATED TO ANY THIRD PARTY NORMUST IT BE USED EXCEPT IN RELATION WITH WHICH IT HAS BE SUPPLIED

NEWTON CONSULTING Sprl
BANKSIDE WORKS, LONDON ROAD, CHALFORD
STROUD, GLOS. GL6 8PR UK

Tel: 44(0)1453 884908
E-Mail: robseby@newtonsprl.co.uk

DATE **23/08/2023** DRAWN BY **AP**

TITLE:
**SPRL
V1 INSTALLATION
INSTRUCTIONS**

FINISH:
MATERIAL:

DWG NO. **V1 VALVE** **A4**